



## AP-GV3000 GSM VoIP Gateway

VoiceFinder AP-GV3000 is a new cutting edge IP to GSM gateway supporting maximum 32 ports of GSM Voice interface. GSM interface of AP-GV3000 provide an optimized call scenario when it interoperates with SIP Proxy or IP-PBX. Compact cost effective design and system architecture of AP-GV3000 provides customer satisfaction in high quality, performance and system reliance. This product uses the state-of-art technology voice compressed algorithm and unique QoS algorithm of AddPac to maintain the maximum voice quality under fast internet line and slow internet line as well. AddPac AP-GV3000 is a device that can support GSM gateway service (Internet->GSM). It also supports SIP, H.323 Multiple VoIP signaling protocol, various voice codec support(G.711, G.726, G.729, G723.1), four(4) module slots for GSM and VoIP module, two(2) fast ethernet ports, 1-port RS232C console, and state-of-art technologies and services. GSM gateway combining IP-PBX is now suggesting a new model for a main voice communication solution. In order to be a part of advanced VoIP communications naturally in the future, making an excellent choice of choosing GSM gateway is essential. VoiceFinder AP-GV3000 is a mid-range GSM gateway providing total 32GSM interface ports. It is suitable for general enterprises, medium and large public offices. It has functions as a media gateway which interoperates with IP-PBX. Especially AP-GV3000 provides an optimal solution of VoIP and GSM communications in telephony environments that using telephone lines and PBX to get connect with a head office. VoiceFinder AP-GV3000 GSM VoIP Gateway supports two(1) 10/100 Base-T fast ethernet Interface ports and provides stabilized leased line environment, ADSL environment, cable modem environment, fixed IP Address, supports all flow IP environment so that it can be selected in accordance with user environments.

Designed on programmable high performance RISC Integrated DSP Technology, AP-GV3000 is capable of adopting new capabilities and improvement by downloading firmware from website or with its auto-upgrade option as the customers' needs grow. Moreover, operators can download the latest protocol or service improvements as well as update firmware by checking the version and activating the auto-upgrade via AP-NMS (Network Management System) or AP-VPMS(VoIP Plug &Play Management System) system of AddPac Technologies.

## Product Highlights

- Powerful RISC microprocessor and DSP
- Two(2) Fast Ethernet interfaces
- Four(4) module slots for GSM Interface Cards
  - Up to 32 GSM Interface Channel
- 8-Port GSM Module
  - 2 Antenna interface (internal 4ch combiner)
  - 8 SIM cards interface
- Module Type Dual Redundancy Power Supply
- VoIP Signaling stacks supporting SIP and H.323 concurrently
- Multi-protocol routing for LAN and WAN access
- Voice Processing
  - VAD, DTMF, CNG, G.168, T.38 G3 Fax Relay
  - Voice Compression Algorithms: G.723, 729A, G.726, and 711
- SNMP MIB V2 for network administration
- Smart, easy Web-based management
- Enterprise VoIP Plug & Play Management System (VPMS) management
- Standard & extended access list for security
- Essential scalability features such as DHCP server & relay, NAT/PAT, IEEE transparent bridging, and debugging/diagnostics
- Remote firmware upgrade using FTP & TFTP
- Cisco-style Command Line Interface (CLI) for expert settings
- Scalability, authenticity, and reliability ensured due to the installed APOS internetworking software



## AP-GV3000 Applications

- GSM VoIP gateway for ISP
- IP to GSM Interworking Service

## Hardware Specification

- High-End RISC Microprocessor (CPU)
- Memory
  - System memory 512Mbyte Flash Memory
  - Main memory 128Mbyte DDR2
- Four(4) module slots for GSM Cards
- 8-Port GSM Interface Card
  - Octal(8) Channel GSM Module
  - Two(2) Antenna Interface (Internal 4-channel Antenna Combiner)
  - Octal(8) SIM Card Interface
  - DSP based Voice Codec
  - 1m or 2m Antenna Cable(option)
- Ethernet Interface
  - 10/100Mbps 2-port Fast Ethernet (RJ45)
- Console Port
  - RS-232C 1-port Console (RJ45)

## Power & Operational environment

- Module Type Dual Power Supply
  - VAC 110~220V, 50/60Hz, 5V 30A
- Temperature 0°C ~+50°C (operating)
- Temperature -40°C ~+85°C (storage)
- Humidity 5%~95%

## Dimensions

- H x W x D : 115mm x 435mm x 374mm
- Weight : 12.9(Kg)

## IP Routing Protocol

- Static and IEEE802.1Q VLAN Routing

## WAN Protocol

- Broadband IP Network
- PPPoE
- Standard Compliant WAN Network Protocol

## GSM Service

- GSM two-stage dialing
- GSM Module Management : PIN, IMSI, Power, (No) Shutdown Setting, Up/Down Speed Display, Current Power Level Display
- GSM Inbound call black list & white list
- VoIP Inbound call black list and White List
- LCR (Least Cost Routing)-GSM Traffic Metering
- LCR (Least Cost Routing)-Scheduling
- LCR (Least Cost Routing)-Simulator
- GSM Messaging Service
- GSM SNMP : GSM Standard MIB
- Call Back Service at GSM Port Busy

## Voice over IP Service

- H.323, SIP Dual Concurrent VoIP Signaling Protocol
- VAD, DTMF, CNG, G.168, T.38 FAX Relay
- Voice Codec : G.723, G.729, G.726, G.711, etc
- High Level VoIP Signaling Debugging Features
- Polarity Inversion Feature
- Various VoIP Features
- Interoperable with Diverse VoIP Gateways
- Interoperable with Diverse VoIP Gatekeeper, SIP Proxy, MGC

## Operation & Management

- Performance Analyzing (Process, CPU, Interface)
- Configuration Backup and Restore for APOS Management
- Debugging and Diagnosis Features
- System Booting/Rebooting through Watch Dog
- Data Logging Features
- IP Traffic Statistics through Accounting
- Debugging/Diagnostic

## Network Management

- Standard SNMP Agent (MIB v2) Support
- Console, Telnet, Web Based Management
- Remote Download via FTP/TFTP
- Remote Firmware Upgrade using FTP/TFTP

## Traffic QoS Control

- Traffic QoS Control Feature For Services
- Voice, Data Prioritizing Control
- Various QoS Algorithm Support

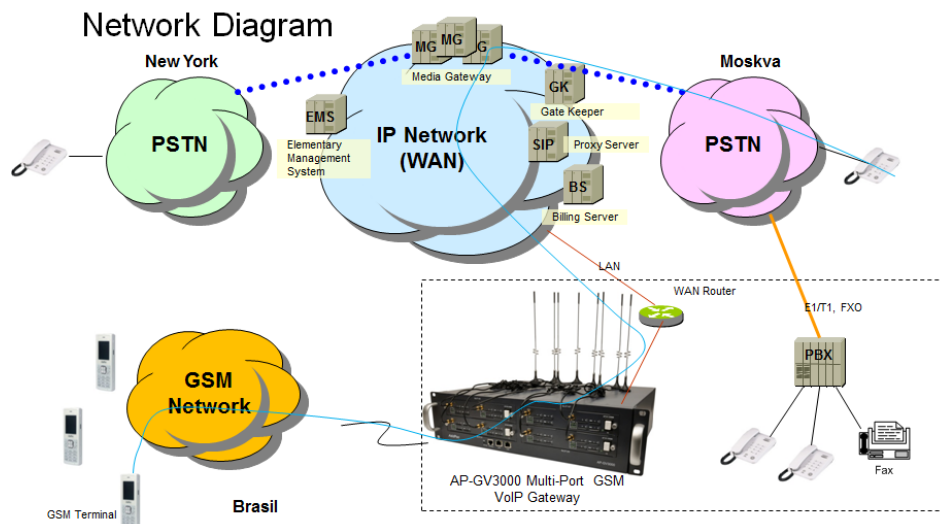
## Security Feature

- IP Packet Filtering / Access List
- Access Control and Data Protections
- Enable/Disable for Specific Protocols
- Multi-level User Account Management
- Auto-disconnect for Telnet/Console Sessions
- PPP User Authentication Support
  - Password Authentication Protocol (PAP)
  - Challenge Handshake Authentication Protocol (CHAP)

## Other Features

- DHCP Server and Relay
- Network Address Translation (NAT)
- Port Address Translation (PAT)
- Transparent Bridging (IEEE Standard)
  - Spanning Tree Bridging Protocol
  - Concurrent Routing and Bridging
- NTP (Network Time Protocol)
- Cisco Style Command Line Interface
- Standard Compliant Network Protocol
- AddPac Proprietary IP Sharing
- MAC Address Filtering
- DNS Proxy

## Network Configuration



## Ordering Information

- AP-GV3000 : Standard Configuration
  - AP-GV3000 GSM VoIP Gateway Main Body
  - Four(4) Module Slots for GSM Cards
  - 2-Port 10/100Mbps Fast Ethernet(RJ45)
  - 1-Port RS232C Console Interface(RJ45)
  - Module Type Dual PSU
  - GSM Interface Cards
  - AP-N2-GSM8 Module
- CAB-LAN Ethernet Cable
- CAB-CON RS-232C Console Cable
- CAB-ANT Antenna Cable